

Gearing the Plastic Industry



INTRODUCTION



Elecon, India's largest manufacturer of Industrial Gears

Founded in 1951, over 60 years ago, Elecon set out on its journey to scale new heights of technical excellence, creating landmarks at every juncture. From elevators and conveyors to high quality gears and being the pioneers in manufacturing of sophisticated bulk material handling equipment. Elecon set up a separate Gear Division in the year 1976. Elecon is renowned for its pioneering acts in India. Elecon's skilled work force compliments them in Elecon's march towards providing innovative solutions. Elecon has supplied hi-tech equipment to major core industries such as Fertilizer Plants, Cement Plants, Coal and Lignite Mines, Power Plants, Textile Industries, Plastics, Steel Plants and Port Mechanization in India and abroad.



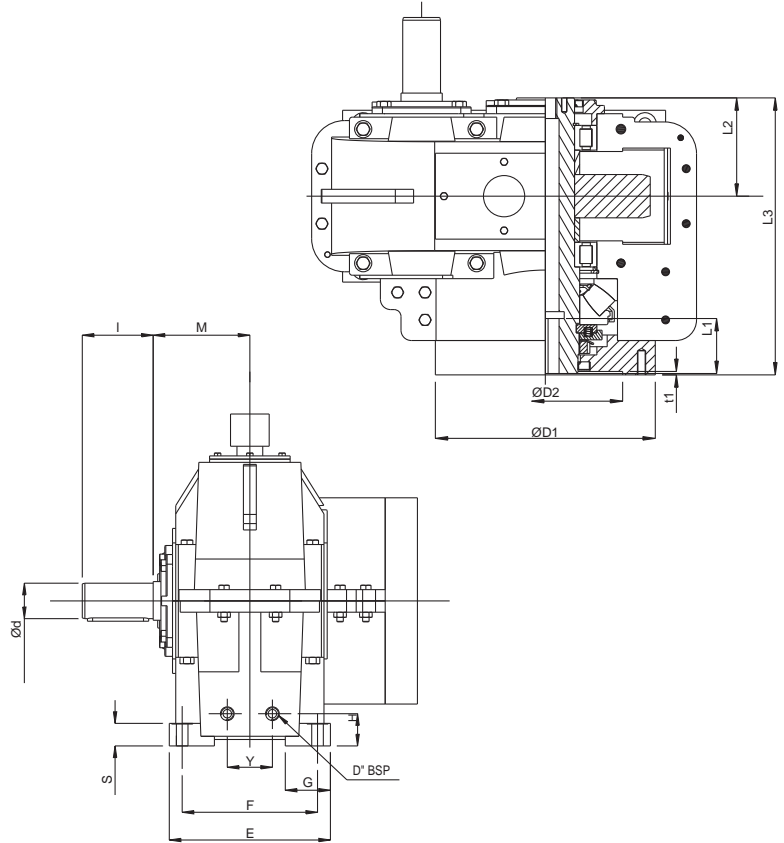
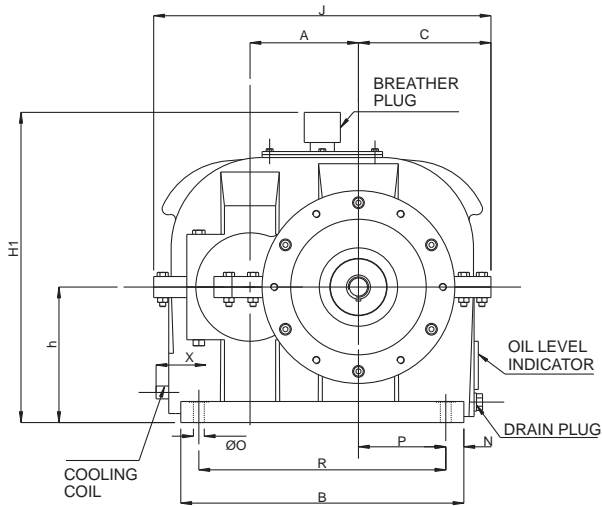
PLASTIC INDUSTRY IN INDIA

The potential of the Indian market has motivated Indian entrepreneurs to acquire technical expertise, attain higher quality standards and build capacities across various facets of the booming plastic industry. Phenomenal developments in the plastic machinery sector coupled with matching developments in the petrochemical sector that support the plastic processing sector, has facilitated the plastic processors to build capacities to service both the domestic and overseas markets.

In the plastic processing sector there are over 30,000 units involved in producing varieties of products through injection moulding, blow moulding, extrusion and calendaring. The capacities built up in most segments along with our latent capacities have propelled us in being able to serve the overseas markets.

Economic reforms launched in India since 1991, have provided an impetus to the plastic industry. Joint ventures, foreign investments and easier access to technology from developed nations have led to the opening up of new vistas to facilitate the growth of this industry.

SAH SERIES - SINGLE SCREW EXTRUDER GEARBOXES



Size	INPUT SHAFT DIA.				DIMENSION [mm]																	AVG. wt. (Kg)	OIL QTY. (ltrs)					
	iN = 5		iN = 6.3		A	B	C	E	F	G	H1	J	h	M	N	O	P	R	S	t2	t1			L1	L2	L3	D1	D2
	d	l	d	l																								
100	30	80	20	50	100	260	135	155	125	50	290	340	125	100	20	14	75	220	20	10	3	70	96	272	200	110	67	3
110	35	80	25	60	110	290	145	170	140	50	320	370	140	105	20	14	85	250	25	10	3	70	106	296	200	115	80	3.25
125	40	110	30	80	125	330	165	185	155	55	355	420	160	115	20	14	100	290	25	10	5	90	112	306	220	115	102	3.5
140	45	110	35	80	140	365	180	200	160	60	410	460	180	125	25	14	110	315	35	10	5	90	121	351	250	170	146	5
160	50	110	40	110	160	410	205	230	190	65	450	520	200	135	30	18	120	350	35	10	5	90	130	375	280	200	205	6.5
180	55	110	45	110	180	470	220	250	210	70	505	560	225	150	30	18	145	410	35	10	5	100	143	403	320	225	252	8.5

GEAR UNIT-THRUST BEARING		
SIZE	THRUST BEARING	DYNAMIC CAPACITY Cdyn (KN)
100	29412E	390
110	29412E	390
125	29414E	520
140	29416E	670
160	29416E	815
180	29420E	980

Nominal Ratio iN	Nominal Speed (RPM)	Size Of Gear Unit					
		100	110	125	140	160	180
		Power Rating P _{N1} (kW)					
5	1500	33	44	77	98	141	151
	1000	22	29	51	65	94	101
	750	17	22	39	49	71	76
6.3	1500	19	30	49	79	94	130
	1000	13	20	33	53	63	87
	750	10	15	25	40	47	65
		Thermal Capacity, Pt1[kW], for Gearboxes with Cooling Coil					
5 ; 6.3	1500	161	185	237	280	323	366
	1000	158	174	228	273	318	363
	750	157	169	219	261	303	345

Nominal Ratio iN	Exact Ratio					
	Size Of Gear Unit					
	100	110	125	140	160	180
5	5	5	5.06	5.06	5	5.05
6.3	6.17	6.18	6.24	6.33	6.24	6.25

SBH SERIES - SINGLE SCREW EXTRUDER GEARBOXES

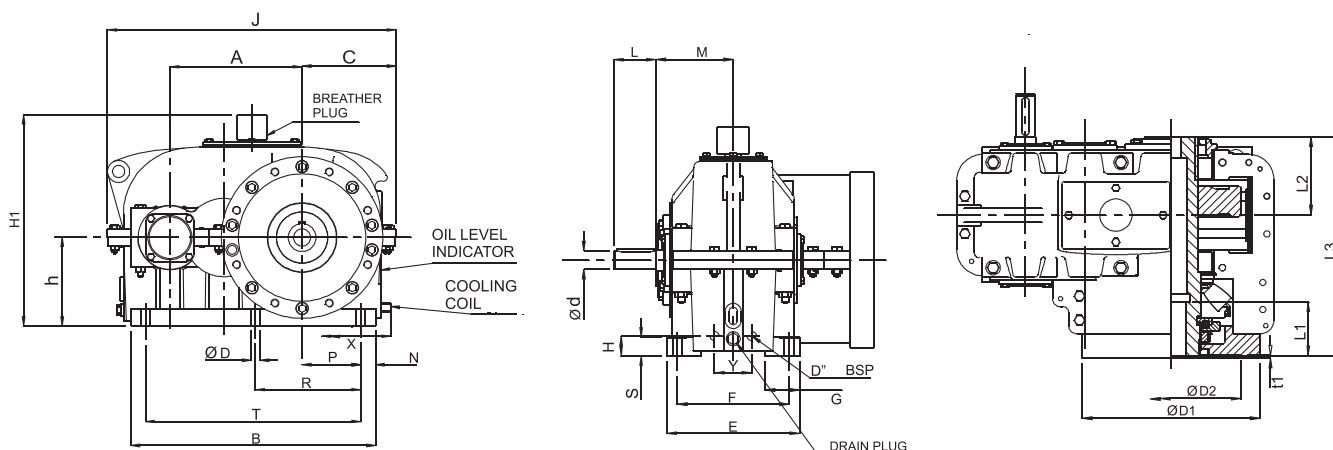


ELECON Make Extruder Gear Units are the result of extensive in-house Research and Development. The Gearboxes are designed to satisfy requirement and conditions encountered in extrusion process. High torque is required for pressurizing and plasticizing moulding material hence the gear units are designed accordingly. Spherical roller thrust bearing is used on the output line to absorb high axial thrust. The units are available in Right hand shaft disposition. ELECON Extruder Gear Units are equipped with as enlarged Spherical thrust bearing mounted forward to the housing. This smart design separates external loads from the torque- transmitting portion of the housing. We incorporated the latest generation of bearings that literally redefines the design limits of

spherical roller bearings. According to their functions; these assemblies are designed independently of each other.

Production Range:

- SBH Series consists of sizes from 110 to 315; having Ratio 6.3 to 22.4 ; covered in this catalogue. All ratios are reducing and defined as the ratio of Input Speed to Output Speed. Double Reduction ratios are exact within $\pm 3\%$.
- Axial self aligning roller bearings of 293....E and 294....E Series.
- Hollow output shafts are normally made with single key way; however double key way or splined bores can also be provided against specific requirement.
- Keys and Keyways on shafts as per DIN6885.
- Units may be operated in either direction of rotation.



SIZE	INPUT SHAFT DIA.				DIMENSION [mm]																								AVG. wt. (Kg)	OIL QTY. (ltrs)
	In<=12.5		In>12.5		A	B	C	E	F	G	h	H1	J	M	N	O	P	Q	R	S	T	L1	L2	L3	D1	D2	D3	t1		
	d	L	d	L																										
110	25	60	20	50	190	350	140	180	150	50	125	310	430	110	20	14	80	215	160	25	310	80	110	322	220	115	180	8	87	2
125	30	80	25	60	215	395	155	200	170	55	140	340	475	120	20	14	95	225	170	25	355	90	120	342	220	115	180	8	110	3.5
140	35	80	30	80	240	440	175	220	190	55	160	380	530	135	20	14	130	233	260	30	400	100	140	373	330	190	280	5	165	4
160	45	110	35	80	270	564	192	250	210	65	180	430	590	145	25	18	155	270	250	35	505	115	147	407	330	200	280	5	230	9
180	50	110	40	110	305	565	215	270	230	70	200	475	665	160	30	18	135	275	270	35	55	125	160	432	315	200	240	8	300	8
200	55	110	45	110	340	625	240	300	250	75	225	520	745	175	35	23	145	328	255	40	555	125	175	498	335	220	300	8	325	11
225	60	140	50	110	385	705	260	320	270	80	250	570	852	190	35	23	165	346	290	45	635	125	188	535	352	260	300	8	400	14
250	70	140	55	110	430	785	290	370	310	90	280	625	925	210	40	27	180	383	315	50	705	125	210	593	395	310	350	10	525	21
280	75	140	60	140	480	875	325	400	340	100	315	690	1035	230	45	27	200	417	355	55	785	125	230	644	480	320	410	8	725	29
315	85	170	70	140	540	995	355	450	380	100	355	785	1145	260	50	33	240	425	425	60	895	125	260	680	520	435	475	10	1200	50

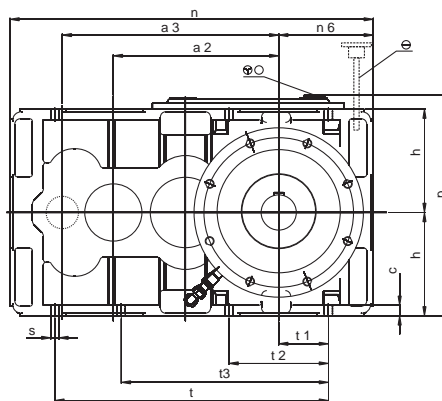
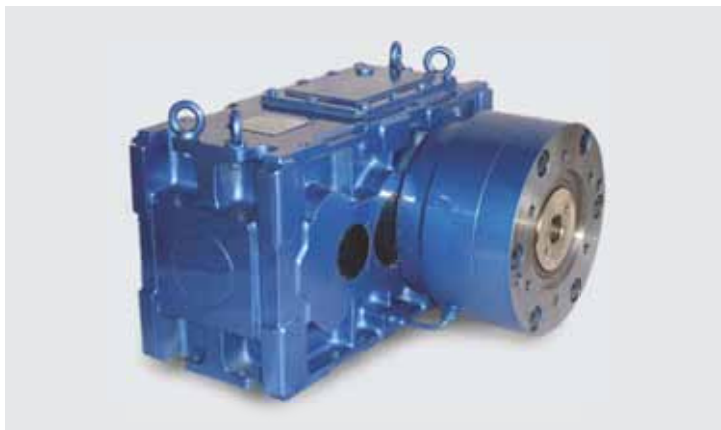
SBH SERIES - SINGLE SCREW EXTRUDER GEARBOXES

RATING CHART FOR SBH GEARBOX

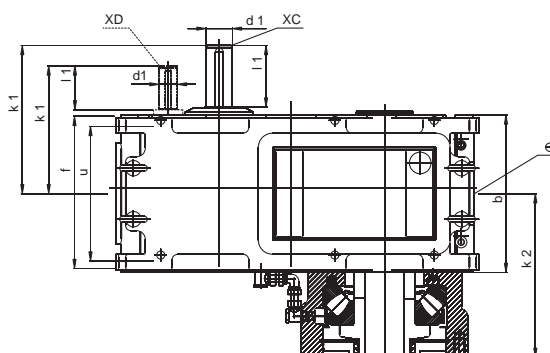
Nominal Ratio iN	Nominal Speed (RPM)	Size Of Gear Unit									
		Power Rating (kW)									
		110	125	140	160	180	200	225	250	280	315
6.3	1500	44	72	104	119	176	305	390	510	808	1079
	1000	29	48	69	79	117	203	260	340	539	719
	750	22	36	52	60	88	153	195	255	404	540
7.1	1500	40	65	94	112	160	272	357	446	729	978
	1000	27	43	63	75	107	181	238	297	486	652
	750	20	33	47	56	80	136	179	223	365	489
8	1500	35	57	85	99	159	240	324	410	655	880
	1000	23	38	57	66	106	160	216	273	437	587
	750	18	29	43	50	80	120	162	205	328	440
9	1500	31	53	75	98	127	214	279	368	567	790
	1000	21	35	50	65	85	143	186	245	378	527
	750	16	27	38	49	64	107	140	184	284	395
10	1500	27	46	68	91	112	188	249	368	524	702
	1000	18	31	45	61	75	125	166	245	349	468
	750	14	23	34	46	56	94	125	184	262	351
11.2	1500	24	41	58	71	98	173	226	291	464	776
	1000	16	27	39	47	65	115	151	194	309	517
	750	12	21	29	36	49	87	113	146	232	388
12.5	1500	22	34	53	63	90	152	197	256	404	549
	1000	15	23	35	42	60	101	131	171	269	366
	750	11	17	27	32	45	76	99	128	202	275
14	1500	20	32	39	55	79	134	180	232	359	486
	1000	13	21	26	37	53	89	120	155	239	324
	750	10	16	20	28	40	67	90	116	180	243
16	1500	19	30	34	46	71	118	158	205	324	444
	1000	13	20	23	31	47	79	105	137	216	296
	750	10	15	17	23	36	59	79	103	162	222
18	1500	14	19	33	44	62	100	132	162	288	393
	1000	9	13	22	29	41	67	88	108	192	262
	750	7	10	17	22	31	50	66	81	144	197
20	1500		17	32	44	42	91	125	154	246	348
	1000		11	21	29	28	61	83	103	164	232
	750		9	16	22	21	46	63	77	123	174
22.4	1500			26	37	44	77	107	149	220	306
	1000			17	25	29	51	71	99	147	204
	750			13	19	22	39	54	75	110	153
Thermal capacity Pt1 [kW] , with cooling coil											
6.3 to 22.4	1500	166	184	208	226	251	277	298	329	385	435
	1000	152	174	202	218	242	265	290	324	380	424
	750	135	157	181	210	231	257	279	315	365	413

GEAR UNIT-THRUST BEARING		
SIZE	THRUST BEARING	DYNAMIC CAPACITY Cdyn (KN)
110	29414E	520
125	29414E	520
140	29418E	815
160	29420E	980
180	29422E	1180
200	29424E	1370
225	29426E	1560
250	29430E	1860
280	29436E	2600
315	29440E	3200

XC/XD SERIES - SINGLE SCREW EXTRUDER GEARBOXES



TYPE	a2	INPUT SHAFT			OIL FILLING IN (Lts.)
		Ød1	k1	l1	
XC-14	216	35k6	218	100	8
XC-16	272	35k6	218	100	11
XC-18	293	45k6	275	120	17
XC-20	347	45k6	275	120	23
XC-22	376	60m6	337	140	31
XC-25	434	60m6	337	140	40
XC-28	464	70m6	369	140	51
XC-31	532	70m6	369	140	70
XC-35	570	90m6	446	180	75
XC-40	647	90m6	446	180	81
XC-42	693	100m6	537	215	98
XC-45	759	100m6	537	215	140



APPLICATION

TYPE	a3	RATIO	INPUT SHAFT			OIL FILLING IN (Lts.)
			Ød1	k1	l1	
XD-14	285	20/71	25 k6	203	82	8
XD-16	341	31.5/112				11
XD-18	387	16/45	35 k6	283	100	17
		50/100				
XD-20	441	22.4/63	35 k6	283	100	23
		71/140	30 k6			
XD-22	492	20/45	50 k6	347	120	31
		50/71	40 k6			
XD-25	550	25/56	40 k6	347	120	40
		63/90	50 k6			
XD-28	591	16/45	50 k6	362	120	51
		50/100	40 k6			
XD-31	659	22.4/63	50 k6	362	120	71
		71.14	40 k6			
XD-35	734	16/45	70 m6	435	145	66
		50/100	50 k6	415	125	
XD-40	811	20/56	70 m6	435	145	86
		63/125	50 k6	415	125	



TYPE	b	c	f	h -0.2	n	n6	p	Ø s	t	t1	t2	t3	u	THRUST BEARING											WEIGHT KG	
														415	417	418	420	422	424	428	430	436	440	448		452
														k2												
XC/XD-14	226	15	216	150	500	134	333	12	348	58	125	192	238	251	253	260									150	
XC/XD-16	226	15	216	180	605	183	393	12	453	107	217	192			253	278	281	291								215
XC/XD-18	294	18	284	190	654	171	419	14.5	486	87	175	248				307	315	320	337							300
XC/XD-20	294	18	284	225	764	227	489	14.5	596	143	285	248						328	337	340						400
XC/XD-22	358	24	346	235	826	215	513	18.5	622	113	226	306							372	372	411					530
XC/XD-25	358	24	346	265	940	271	573	18.5	736	169	340	306									411	429				730
XC/XD-28	420	28	408	280	1000	256	610	24	752	132	265	360									433	450	465			920
XC/XD-31	420	28	408	315	1137	325	680	24	889	201	402	360										450	462	480		1260
XC/XD-35	450	32	438	300	1315	345	610	24	1005	190	380	695	396											565		2200
XC/XD-40	450	32	438	375	1470	423	760	24	1157	265	477	847	396												590	2655

XC/XD SERIES - SINGLE SCREW EXTRUDER GEARBOXES

XC/XD RATING

Helical Gear Units, two-stage														
TYPE			14	16	18	20	22	25	28	31	35	40	42	45
XC			Nominal Power P _N [kW]											
iN	n1	n2												
	[min-1]													
4	1500	375	121		230		542		840		1800		2500	
	1000	250	81		153		360		560		1200		1670	
4.5	1500	335	108		230		500		840		1750		2500	
	1000	220	72		153		360		560		1170		1670	
5	1500	300	98		230		460		770		1600	1800	2500	2500
	1000	200	65		153		350		513		1070	1200	1670	1670
5.6	1500	270	91		230	230	430	540	710	840	1500	1750	2500	2500
	1000	180	58		153	153	310	360	473	560	1000	1170	1670	1670
6.3	1500	240	81	115	211	230	400	500	661	840	1430	1600	2300	2500
	1000	160	52	85	141	153	270	360	441	560	955	1070	1535	1660
7.1	1500	211	72	112	196	230	367	460	600	770	1260	1500	2230	2500
	1000	141	46	75	131	153	245	350	400	513	840	1000	1490	1670
8	1500	188	64	106	174	232	330	410	570	711	1120	1490	1985	2300
	1000	125	41	71	116	155	220	310	380	474	746	990	1325	1530
9	1500	167	57	94	155	206	294	374	538	660	995	1320	1763	2200
	1000	111	36	63	103	137	196	249	358	440	663	880	1175	1470
10	1500	150	51	85	139	185	264	358	483	600	895	1200	1590	1980
	1000	100	33	57	93	123	176	239	322	400	600	800	1058	1320
11.2	1500	134	46	76	124	165	236	326	352	589	800	1070	1420	1770
	1000	89	29	51	83	110	157	217	301	391	533	710	945	1180
12.5	1500	120	41	68	111	148	211	304	426	527	745	955	1320	1585
	1000	80	26	45	74	99	141	203	284	351	500	640	880	1055
14	1500	107	37	61	94	132	189	276	373	470	680	853	1180	1415
	1000	71	23	41	63	88	126	184	249	312	452	570	786	945
16	1500	94	30	53	81	116	160	242	314	427	560	775	1020	1290
	1000	63	20	35	54	77	110	161	209	285	370	520	680	860
18	1500	83	28	47	71	103	145	215	280	392	500	690	878	1170
	1000	56	18	31	48	69	96	143	187	261	330	460	590	780
20	1500	75		42		93		183		364		596		1010
	1000	50		28		62		122		243		398		675
22.4	1500	67		38		82		160		306		533		884
	1000	44.5		25		55		105		204		355		587
25	1500	60		32		74		143		269				
	1000	40		21		49		95		179				
28	1500	54		29										
	1000	35.5		19										

Helical Gear Units, three-stage														
TYPE			14	16	18	20	22	25	28	31	35	40	42	45
XD			Nominal Power P _N [kW]											
iN	n1	n2												
	[min-1]													
16	1500	94			87				300		582		1031	
	1000	63			58				200		388		687	
18	1500	83			73				267		527		917	
	1000	56			49				178		351		611	
20	1500	75	26		64		132		252		447	621	817	1029
	1000	50	17		43		88		168		298	414	545	686
22.4	1500	67	23		62	83	118		238	294	416	554	737	937
	1000	44.5	15.2		41	55	79		159	195	277	369	491	625
25	1500	60	19.5		53	74	103	155	213	264	380	477	660	808
	1000	40	13		35	49	69	103	142	176	253	318	440	539
28	1500	54	18		46	66	93	130	180	256	322	443	584	735
	1000	35.5	12		29	39	62	87	120	171	209	295	389	490
31.5	1500	47.5	16	27	41	59	84	113	160	235	284	394	502	666
	1000	31.5	11	18	27	39	56	75	107	157	189	263	333	444
35.5	1500	42.5	14	24	37	52	74	101	150	208	267	338	465	569
	1000	28	9.3	16	25	35	49	67	100	139	178	223	310	379
40	1500	37.5	12.2	20	32	46	65	97	126	172	224	300	409	495
	1000	25	8.1	13.3	21	31	43	65	84	115	149	200	273	330
45	1500	33.5	11	18	29	41	58	81	112	150	200	276	354	466
	1000	22.2	7.3	12	19	27	39	54	75	100	133	184	235	311
50	1500	30	10	17	28	37	53	71	106	148	186	234	330	404
	1000	20	6.7	11	19	25	35	47	71	99	124	156	220	269
56	1500	27	9.1	15	23	32	47	64	95	123	169	215	295	356
	1000	17.9	6.1	10	15	21	31	43	63	82	113	142	197	236
63	1500	23.8	7.7	12.7	20	29	41	61	80	107	142	197	259	327
	1000	16	5.2	8.5	13	19	27	41	53	71	95	131	173	218
71	1500	21	7	11	18	26	37	51	71	104	126	175	222	295
	1000	14	4.7	7.3	12	17	24	34	47	69	84	117	148	197
80	1500	18.8		11	16	23		45	60	92	119	149	206	252
	1000	12.5		7.3	11	15		30	40	61	79	99	137	168
90	1500	16.7		9.4	14.3	21		40	56	76	99	133	182	220
	1000	11.1		6.3	9.5	13		27	37	51	66	89	121	146
100	1500	15		7.7	12.9	18		50	67	90	124	158	210	
	1000	10		5.1	8.6	12		33	45	60	83	105	140	
112	1500	13.4		7.2		17			59		106		180	
	1000	8.9		4.8		11			39		71		120	
125	1500	12				15			55		96		158	
	1000	8				9.9			37		64		105	
140	1500	10.7				13			48					
	1000	7.1				8.8			32					

ELECON PARALLEL TWIN SCREW GEAR BOX

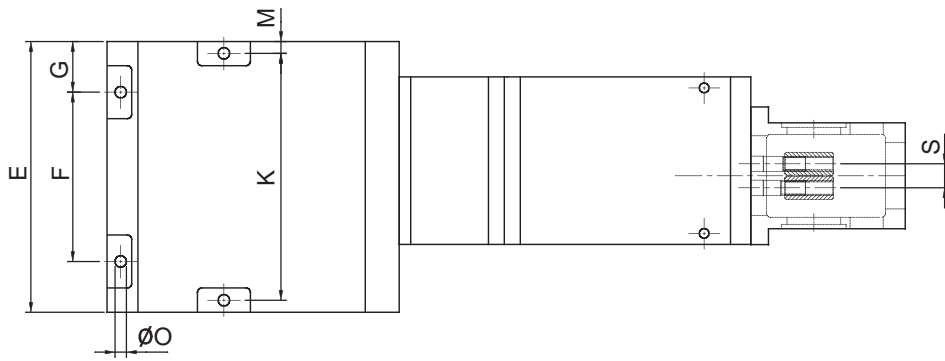
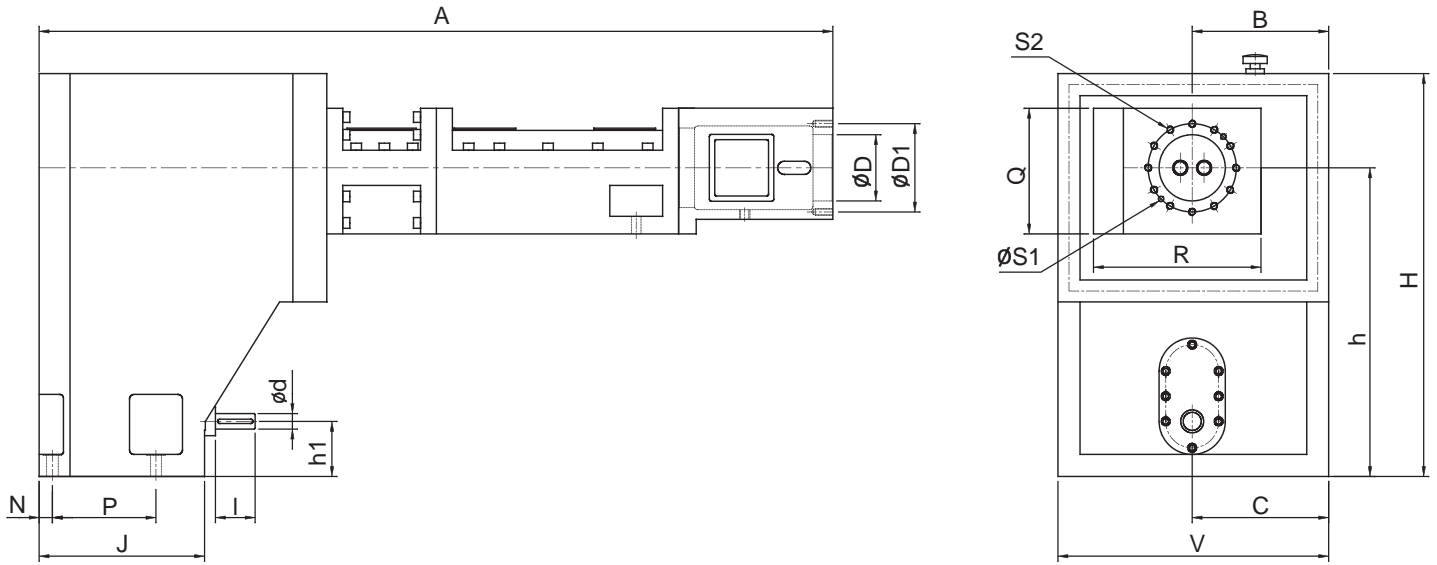


ELECON Twin Screw Drives offers dual-shaft counter rotating extruder gear units. The gearboxes of this series have been developed by featuring high torque and high speed output rate. The series of gearboxes are embedded with excellence high dissipation and oil lubrication system to perform stable output under heavy loading force. The axial thrust is supported by axial roller-type swivel thrust bearing of the 294...E series, coupled with thrust bearing assembled in tandem way. ELECON aim to offer the high tech and reliable product service to the customer worldwide.

Feature :

- Parallel Twin screw Extruder is specifically designed and developed for the application.
- ELECON has adopted proven technology from world leader as well as from own development.
- Featuring high torque and high output speed rated design.
- Coupled with thrust bearings assembled in tandem way.
- The best transmission efficiency & high torque and sufficient safety co-efficient.
- The precision of gear grinding upto DIN 6 grade, operation noise is kept below 80 dBA.
- Forced lubrication and built-in the cooling and filter system ensure excellent heat dissipation.
- Highest gearbox structure strength ensures minimum rotation vibration.

SIZE	Out Put shaft Centre distance, (mm)	Screw diameter, (mm)	Input speed (RPM)	Output speed (RPM)	Gearbox Ratio	Each shaft Nominal torque, (Nm)	Total Nominal torque, (Nm)	Axial Thrust (KN)	Motor Power (kW)
65	55	65	1500	48	31.3	2984	5968	Coa=1426	30
75	64	75	1500	45	33.2	3926	7852	Coa=3216	37
90	75	90	1500	45	33.2	5836	11672	Coa=4012	55
107	90	107	1500	38.2	39.2	11309	22618	Coa=5800	90

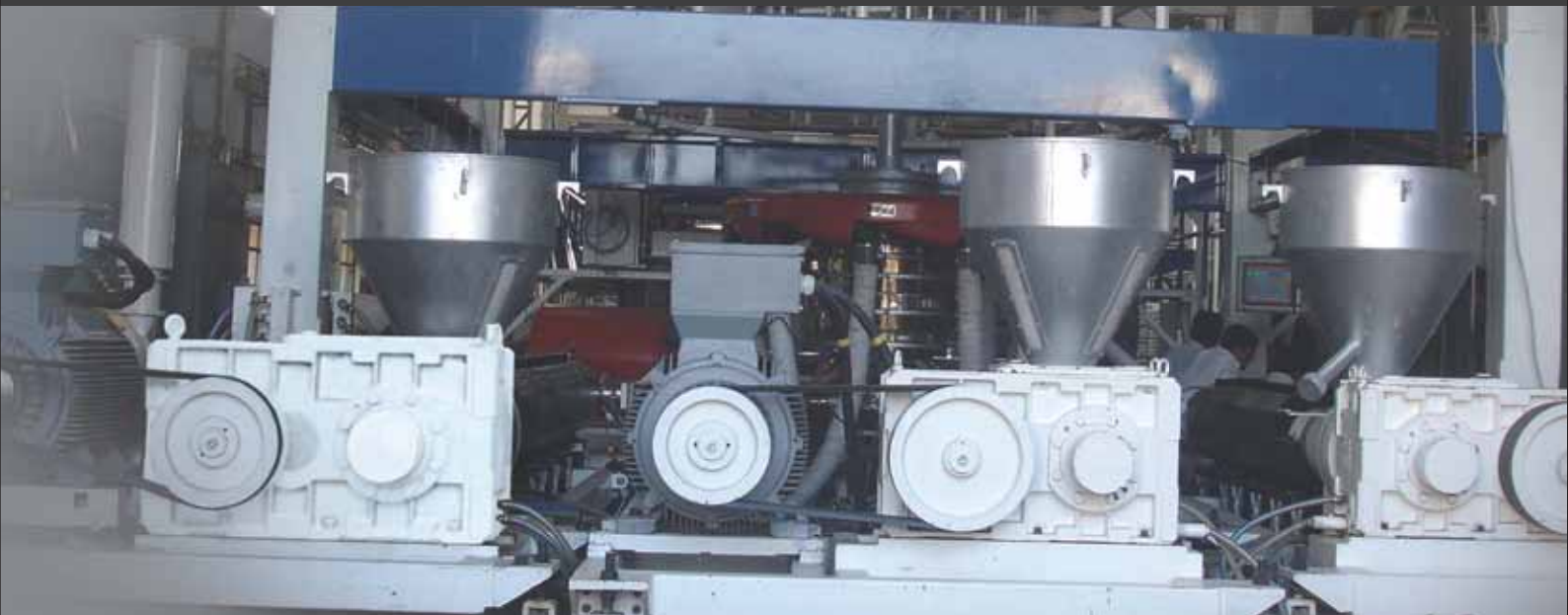
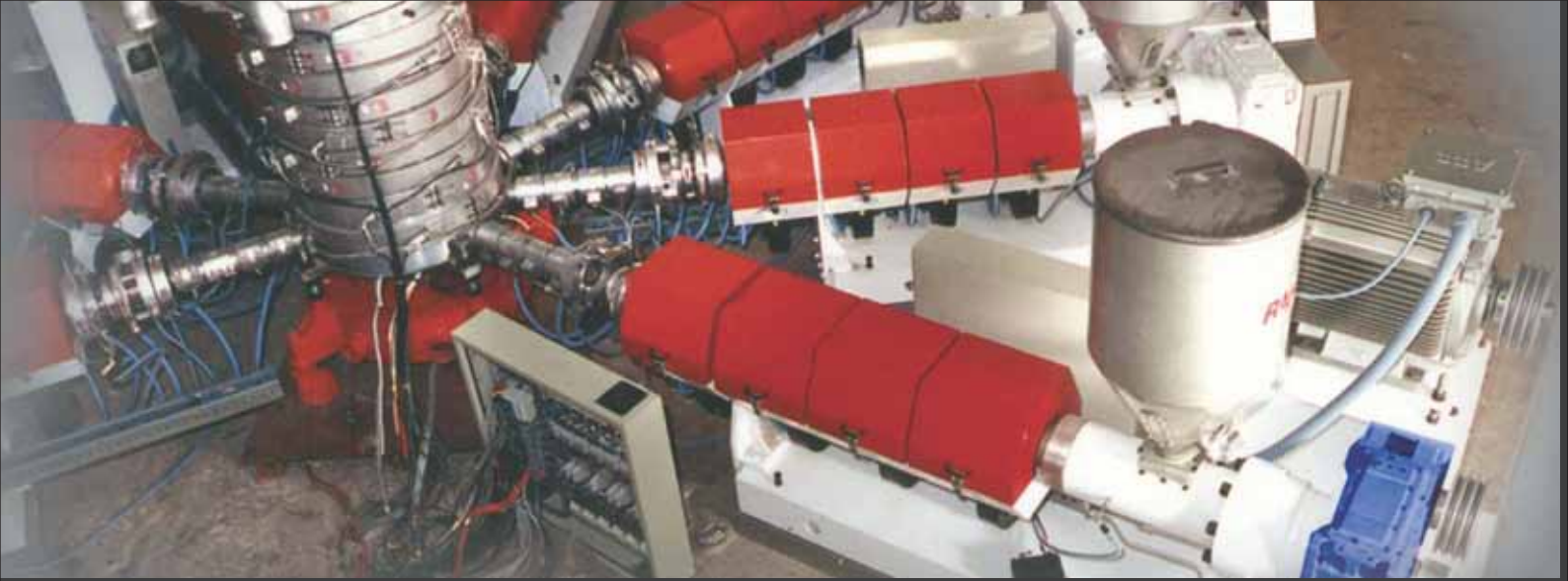


Size	Input Shaft			Output Shaft													Mounting Hole								Average Weight [kg]	Oil Quantity [Litres]	
	d	l	h1	A	B	C	D	D ₁	E	F	G	H	H ₁	J	K	M		N	O	P	Q	R	S	S ₁			S ₂
ETS..65	35 h6	90	180	1800	310	344	150 ^{+0.04}	200	614	384	115	700	914	375	560	27	30	26	235	285	240	55	16 H7	M16	614		
ETS..75	40 h6	90	180	1916	320	340	160 ^{+0.04}	230	620	390	115	730	942	415	560	30	30	26	275	265	264	64	12 H7	M16	620		
ETS..90	45 h6	90	180	2185	330	290	200 ^{+0.072}	265	660	440	110	780	1000	445	610	25	25	26	315	300	300	75	16 H7	M20	660		
ETS..107	50 h6	90	200	2517	365	415	250 ^{+0.072}	300	750	520	115	900	1160	515	690	30	30	32	365	400	455	90	16 H7	M20	750		

Modification of dimensions reserved.

Shaft ends with keys according to DIN 6885, part 1, Shape A.
 Shaft centering according to DIN 332, shape DS (with thread).

- 1) Max. dimensions; details acc. to order related documents
- 2) Approximate values; exact values acc. to order related documents



Extruder Gear units in
Various Extrusion
applications for
**PLASTIC
INDUSTRY**



National Branches :

Ahmedabad

Tel: +91 79 26406683/26406684/26406685
 Fax: +91 79 2640 1363
 Email : salesahd@elecon.com

Bangalore

Tel: +91 80-25290082, 25250219, 25252925
 Fax: +91 80-25251834
 Email : salesbgl@elecon.com

Bilaspur

Tel: +91 7752 247723 / 247625
 Fax: +91 7752 247720
 Email : salesbil@elecon.com

Chennai

Tel: +91 44 24349237/24349497/24322455
 Fax: +91 44 2434 9643
 Email : saleschn@elecon.com

Indore

Tele Fax: + 91 731 257 6100
 Email : salesindr@elecon.com

Kolkata

Tel: +91 33 2476 1861 / 2476 0876
 Fax: +91 33 2476 1831
 Email : saleskol@elecon.com

Madurai

Tel: +91 4549 293488
 Email : salesmadu@elecon.com

Nagpur

Tel: +91 712 6642600 / 6642 601
 Fax: +91 712 6642 622
 Email : salesnag@elecon.com

Mumbai

Tel: +91 22 22821315/22820725/22821365
 Fax: +91 22 2287 0791
 Email : salesbom@elecon.com

New Delhi

Tel: +91 11 2341 4340 / 2341 4341
 Fax: +91 11 2370 9046
 Email : salesdel@elecon.com

Pune

Tel: +91 20 4019 1400
 Fax: +91 20 4019 1411
 Email : salespune@elecon.com

Raipur

Tele Fax: +91 771 2259 321 /23/24/30
 Email : salesrai@elecon.com

Hyderabad

Tele Fax: +91 40 64561199
 Email : salessec@elecon.com

Vadodara

Tel: +91 265 2313 670
 Tele Fax: 91 265 2312 972 / 2312 980
 Email : salesvad@elecon.com

Vallabh Vidyanagar

Tel. +91 02692-231125 / 227559/227549/ 227560
 E mail : salesvvn@elecon.com

International Network :

MIDDLE EAST :

ELECON MIDDLE EAST FZCO, Dubai

Phone : +97 146 091 424, +97 146 091 425
 Fax : +97 146 091 426
 E-mail : salesme@elecon.com

FAR EAST :

ELECON SINGAPORE PTE. LTD.

Phone : +65 622 782 58
 Fax : +65 622 789 42
 E-mail : salesap@elecon.com



AUSTRALIA

Radicon Transmission
 (Australia) Pty. Ltd.
 Tel: +61 488 054 028
 Fax: +61 295 213 522
 salesap@elecon.com
 www.radicon.com

UNITED KINGDOM

Radicon Transmission UK LTD.
 Tel: +44 (0)1484 465800
 Fax: +44 (0)1484 465801
 sales@radicon.com
 www.radicon.com

THAILAND

Radicon Transmission Thailand Ltd.
 Tel : +66 38 459 044
 Fax: +66 38 213 655
 salesap@elecon.com
 www.radicon.com

UNITED STATES OF AMERICA

RADICON USA
 Tel. 1-847-593-9910
 Fax. :1-847-593-9950
 salesusa@radicon.com
 www.radicon.com

MIDDLE EAST

Radicon Transmission FZE
 Tel: + 97165527950
 Fax: + 97165527951
 radicon@eim.ae
 www.radicon.com



SWEDEN

AB Benzlers
 Tel: + 46 42 18 68 00
 Fax: + 46 42 21 88 03
 info@benzlers.com
 www.benzlers.com

NETHERLANDS

Benzler-TBA BV
 Tel : +31 077 324 5900
 Fax: +31 077 324 5901
 mail@benzlers.com
 www.benzlers.com

GERMANY

Benzler Antriebstechnik
 Gmbh
 Tel: +49 0800 350 4000
 Fax: +49 0800 350 4001
 mail@benzlers.com
 www.benzlers.com

FINLAND

O.Y. Benzler AB
 Tel: +358 9 340 1716
 Fax: +358 10 296 2072
 info@benzlers.com
 www.benzlers.com

DENMARK

Benzler Transmission A/S
 Tel: +45 36 34 0300
 info@benzlers.com
 www.benzlers.com

